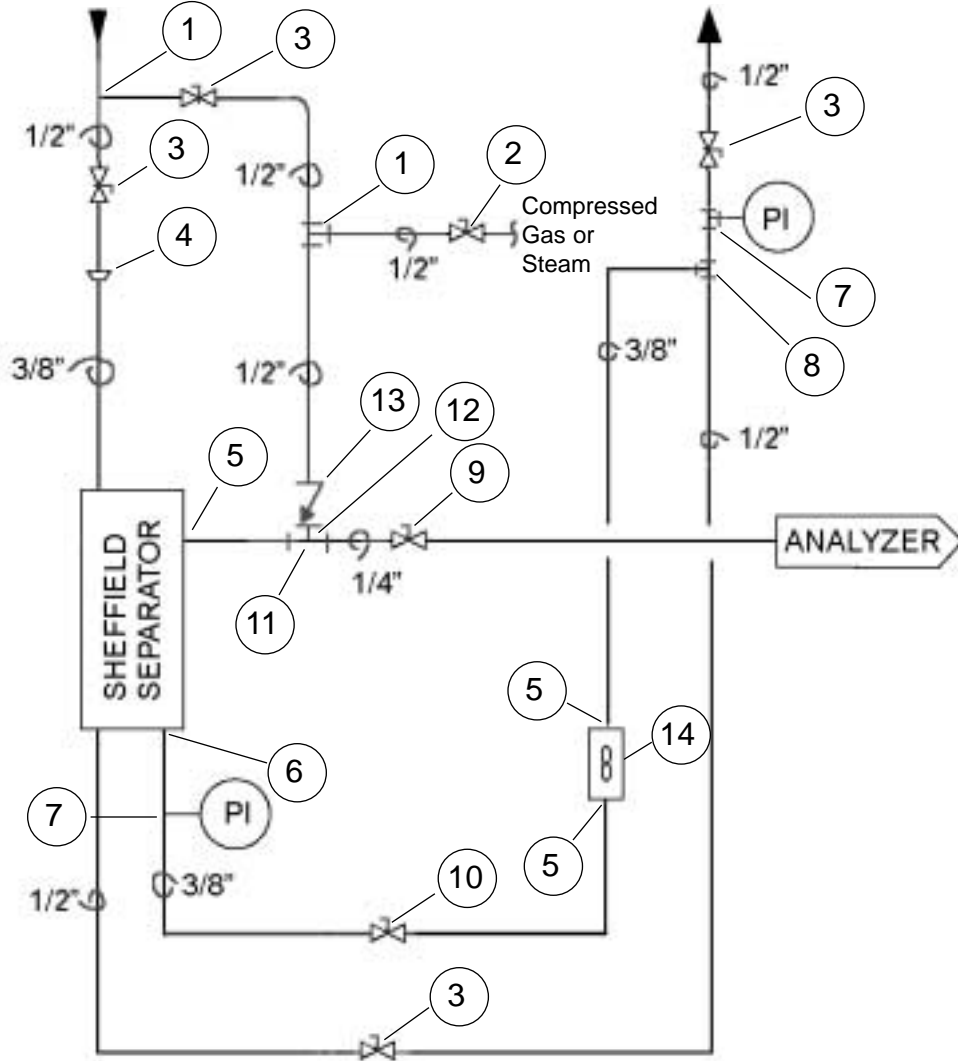


STACK

Pump or Eductor Return



SHEFFIELD SEPARATOR COMPANY

Sheffield Stack Separator  
Stack Application  
Installation Diagram

### Stack Application Bill of Materials

Item	Qty	Description	Part #
1	2	1/2" Union Tee	SS-810-3
2	1	1/2" Needle Valve	SS-1RS8
3	4	1/2" Ball Valve	SS63TS8-JK
4	1	1/2" x 3/8" Reducing Union	SS-810-6-6
5	3	1/4" Male Connector	SS-400-1-4
6	1	1/2" x 3/8" Reducer	SS-600-R-8
7	2	3/8" x 1/4" Female Branch Tee	SS-600-3-4TTF
8	1	1/2" x 3/8" Reducing Union Tee	SS-810-3-8-6
9	1	1/4" Ball Valve	SS-62TS4-JK
10	1	3/8" Ball Valve	SS-62TS6-JK
11	1	1/4" Union Tee	SS-400-3
12	1	Reducing Port Connector	SS-811-PC-4
13	1	1 PSI Check Valve	SS-8C-1
14	1	*Wallace & Tieran Rotometer	32E113SSXX2X

\*Or equivalent

Swagelok part numbers unless specified