

Telemetry Solutions

Modern cloud-based remote asset monitoring systems capable of delivering critical status and alarm information in real-time

Connects users to field assets via wired or wireless configurations using both cellular and satellite networks to effectively view and manage equipment

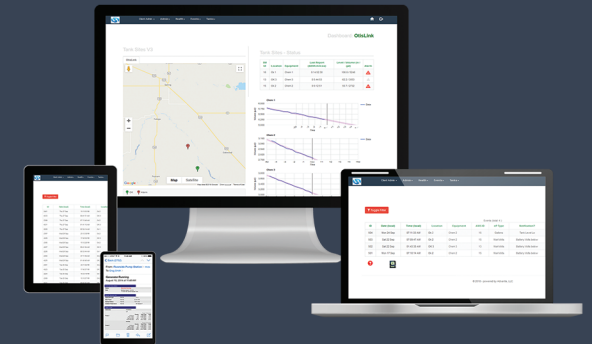
One system for all environments and industries



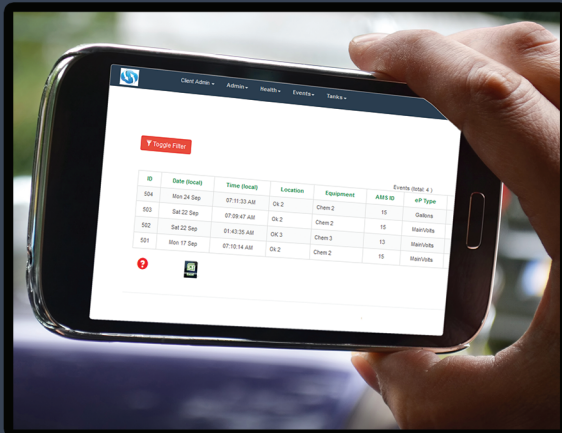
Real-Time Data

Administrative Controls

Asset Maps & Charts



TEXT MESSAGE & EMAIL ALERTS



Contact Us

(870) 918-4754
sales@otislink.com
www.otislink.com

**MONITOR & MANAGE ASSETS
FROM ANYWHERE**

www.otislink.com



Why Choose Otis Link?

Unique programming logic

Varied communication (via cellular, satellite, Ethernet, and custom radio)

Custom circuit boards to meet application-specific needs

Intrinsic safety (placement in explosion-rated areas)

Suitable for harsh environments (materials to operate in most chemicals available)

Secure, cloud-based data transfer

Real-time notifications

Increase production equipment longevity

Access to user-friendly reports, charts and related data

Improve on-site safety measures through a remote approach

Optimize production

Eliminate unnecessary trips to the headquarters

Reduce time and money spent on infrastructure and capital costs

Avoid software updates through consistent system compatibility



Product Overview

Otis Link telemetry systems include field units, communication, and web applications. Our products are energy-efficient, wireless, and intrinsically safe.

Otis Link telemetry systems use an efficient battery/solar power management system that includes scaling capability—allowing users to extend battery life.

Multi-communication options facilitate integration of Otis Link telemetry systems with existing detection products in the field. Standard solutions include: serial, analog, digital, GPS, 1-Wire, and Verizon Modem.



Industries Served

Otis Link telemetry provides reliable, convenient, web-based solutions for monitoring, measuring and controlling systems remotely. Our products are innately robust and capable of serving applications in the harshest environments across a multitude of industries.

- ✓ Wastewater Treatment
- ✓ Oil & Gas
- ✓ Environmental
- ✓ Refineries
- ✓ Agriculture
- ✓ Industrial Waste
- ✓ Landfills
- ✓ Food & Beverage
- ✓ Industrial Processing
- ✓ Water Distribution
- ✓ Tank Monitoring